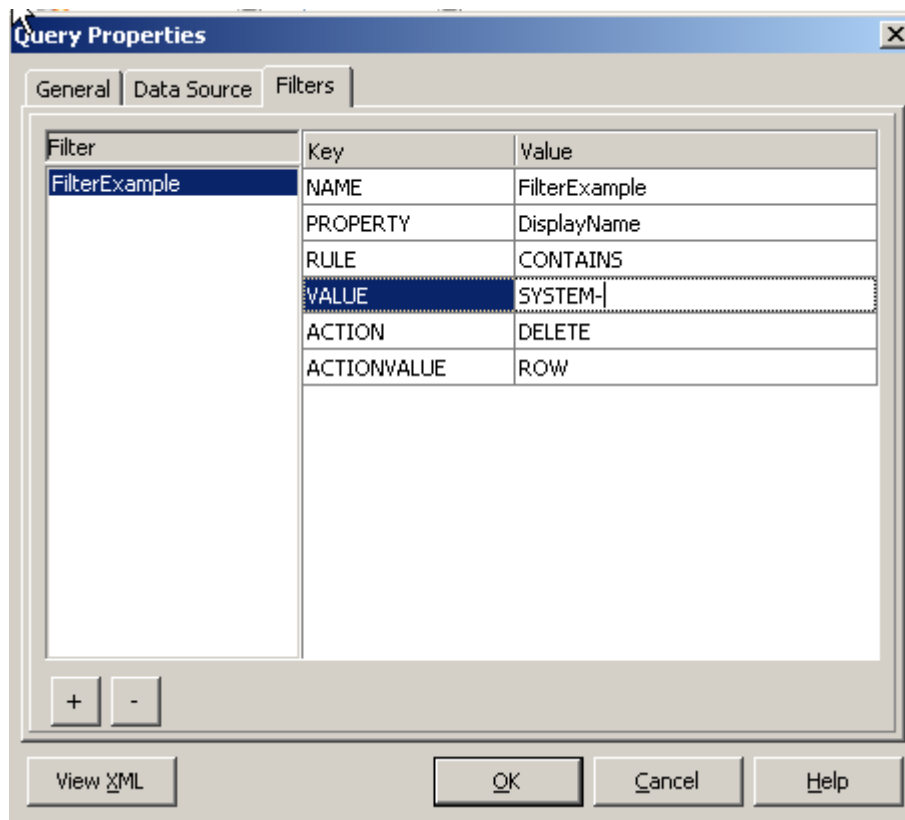




STEALTHtip #14

Did You Know? Defining Filters

You can define filters within the **Query Editor** itself, rather than filtering out rows after the fact.



The above filter, for example, will automatically filter out all system mailboxes from your query, which can result in a smaller, cleaner data set for analysis and reporting.

For additional troubleshooting tips and information email support@stealthbits.com.

