

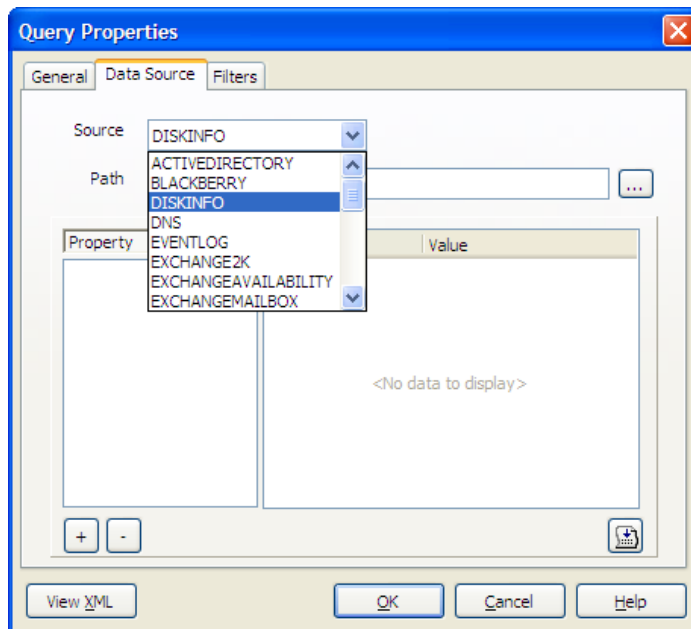


STEALTHtip #26

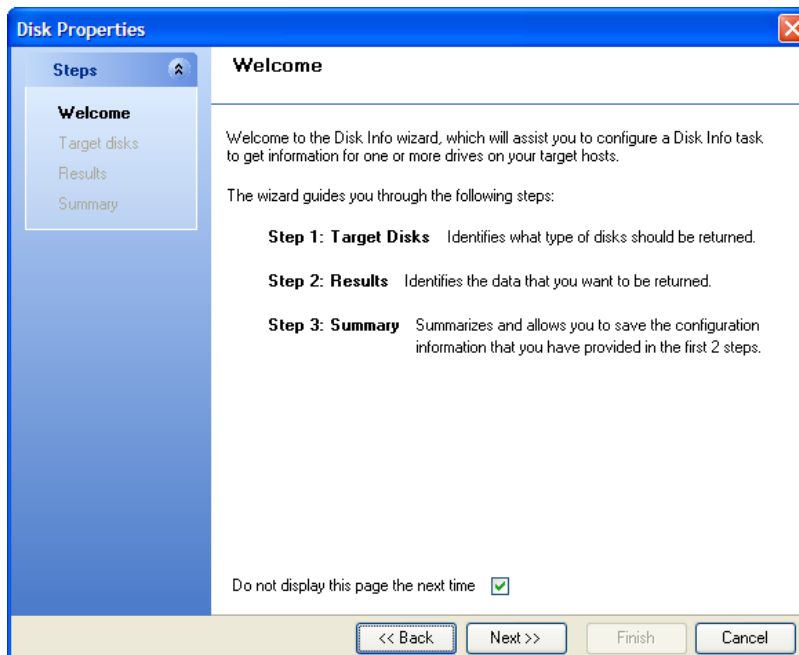
How To: Using the Disk Info Data Collector

Step 1: Select the Disk Info Data Collector through the Data Source tab drop-down selection list within your Query Properties.

Next, invoke the Data Collector by clicking the (...) button to the right of the Path field.



Step 2: Review the Welcome pane of the Disk Info Data Collector. Click “Next >>” to continue.



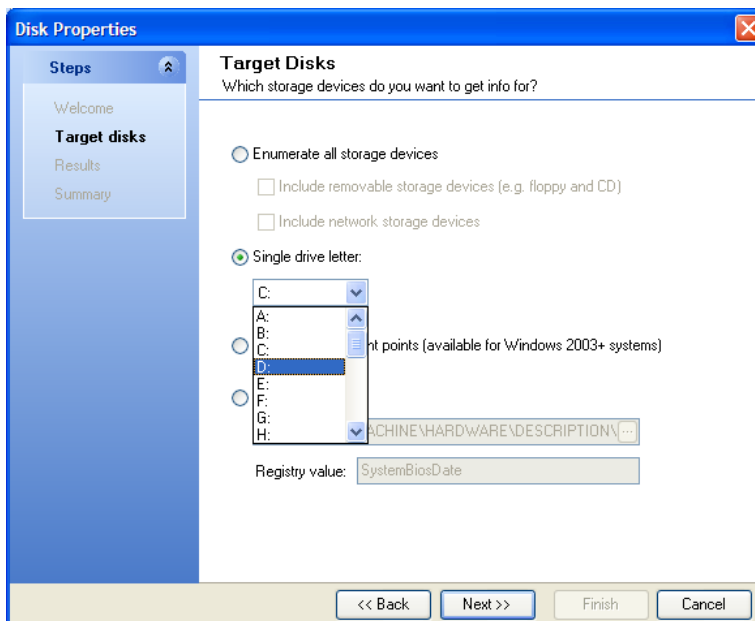


Step 3: Choose which storage devices you'd like to get info for and select the appropriate options from the selection pane.

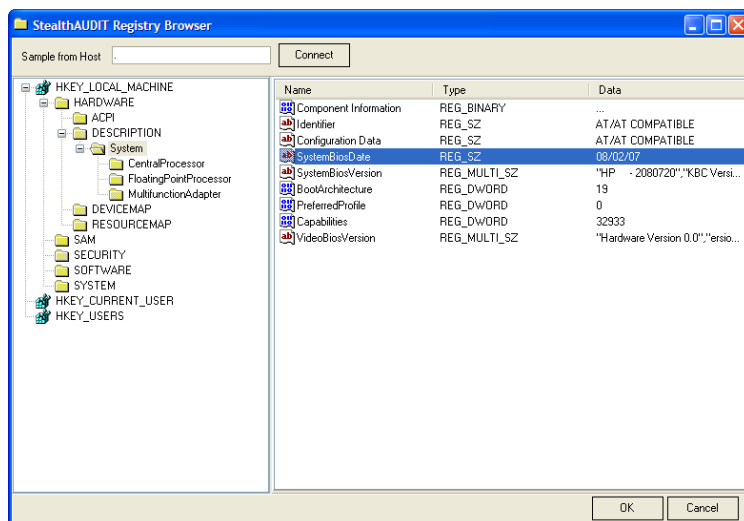
OPTIONAL: To perform a Registry lookup, select the "Registry lookup:" option and invoke the Registry Browser by clicking the three-dot radio button "...".

Sample from your own system or another system in the environment and select "Connect".

Browse to the appropriate location, select the property of your choosing, and select "OK" to exit the browser.



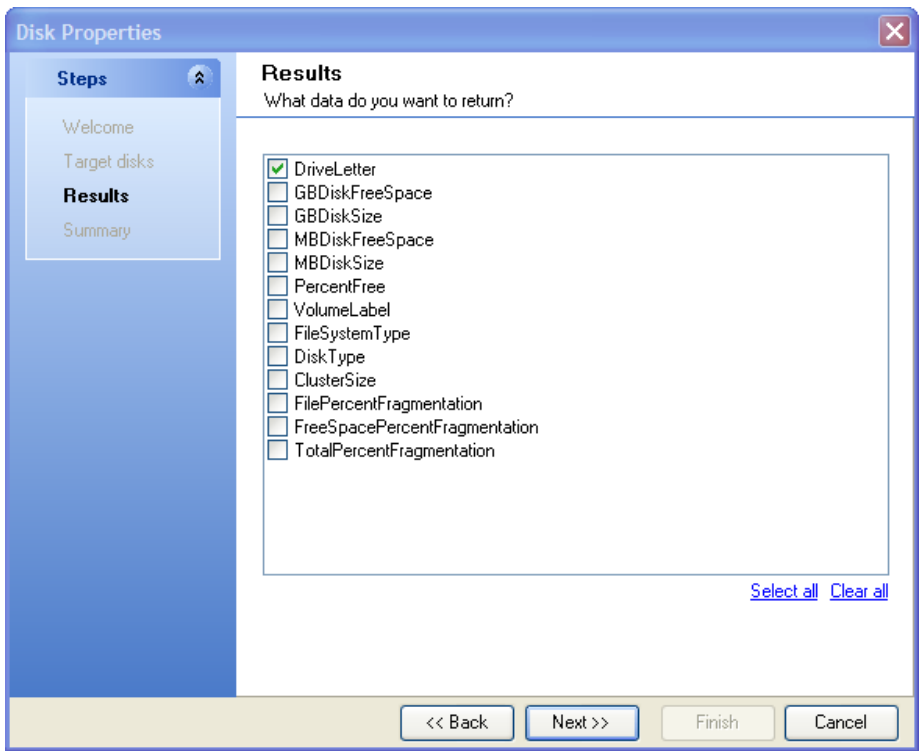
Registry Browser



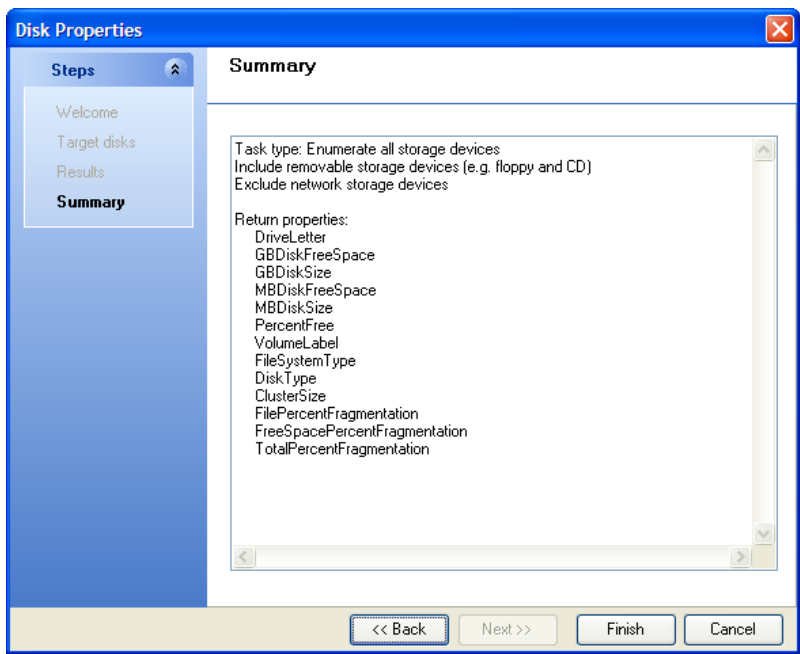
Click "Next >>" when finished.



Step 4: Select the properties you'd like your query to return by selecting the checkboxes next to each appropriate selection option.



Step 5: Click "Next >>" to continue and then "Finish" to complete the crafting of your query.



For additional troubleshooting tips and information email support@stealthbits.com.

