



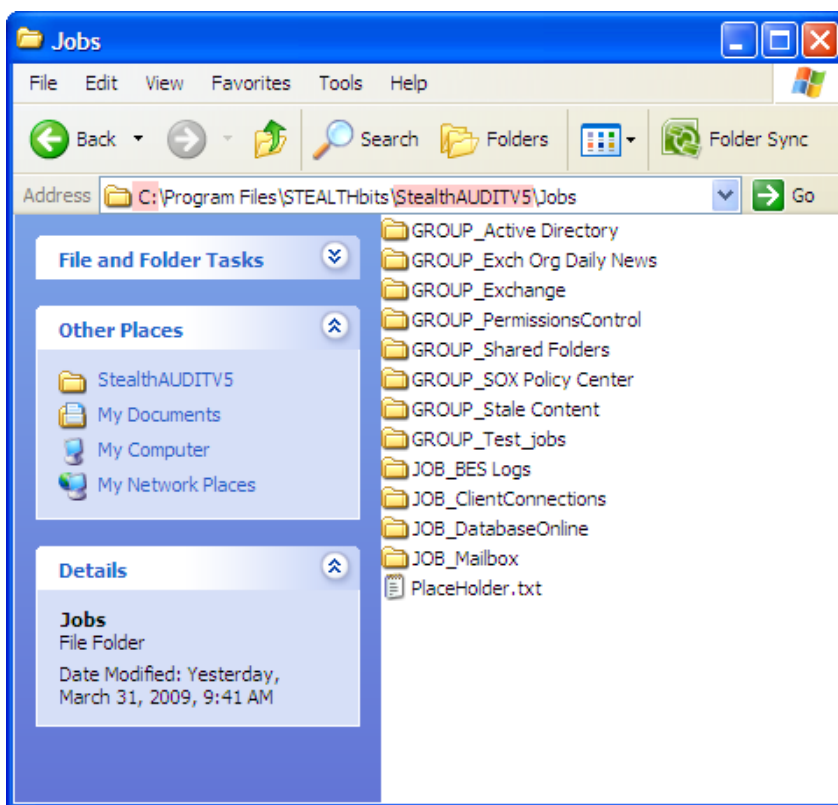
# STEALTHtip #35

## How To: Install a Job

### Instantiating Jobs into your StealthAUDIT Job Tree

StealthAUDIT Jobs and Solution Sets are comprised of files contained within the file system of your StealthAUDIT installation. All Jobs and Job Groups contained within your StealthAUDIT Job Tree are housed within the “Jobs” directory, which can be found in the following location:

- [DRIVE LETTER]:\Program Files\STEALTHbits\StealthAUDITV[X]\Jobs
  - **StealthAUDITV[X]** - Depending upon the version of StealthAUDIT installed, X can equal 4 or 5 (i.e. StealthAUDITV4 or StealthAUDITV5)



Instantiating external Jobs or Jobs contained within other StealthAUDIT consoles is as easy as copying and pasting the Job or Job Group into this location.

Follow the steps below to load a StealthAUDIT Job into your StealthAUDIT Job Tree.



**Step 1:** Locate your StealthAUDIT Job file.

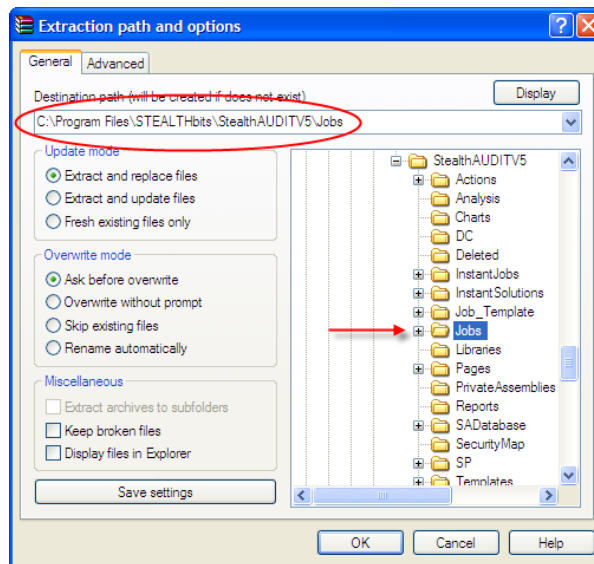
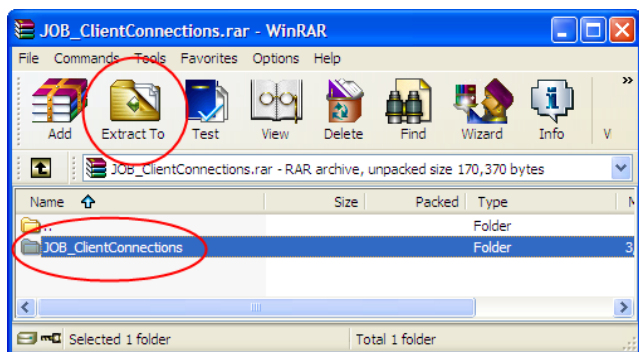
If a StealthAUDIT Job has been sent to you by STEALTHbits Technologies, a colleague, or other entity, it is most likely in one of two formats:

- Archive (.zip, .rar, etc.)
- Or, a folder containing the Job contents
  - JOB\_[Name of your Job] or GROUP\_[Name of your Job Group]

If your Job or Job Group is contained within an Archive, extract the desired content from the Archive to the Jobs directory within StealthAUDIT.

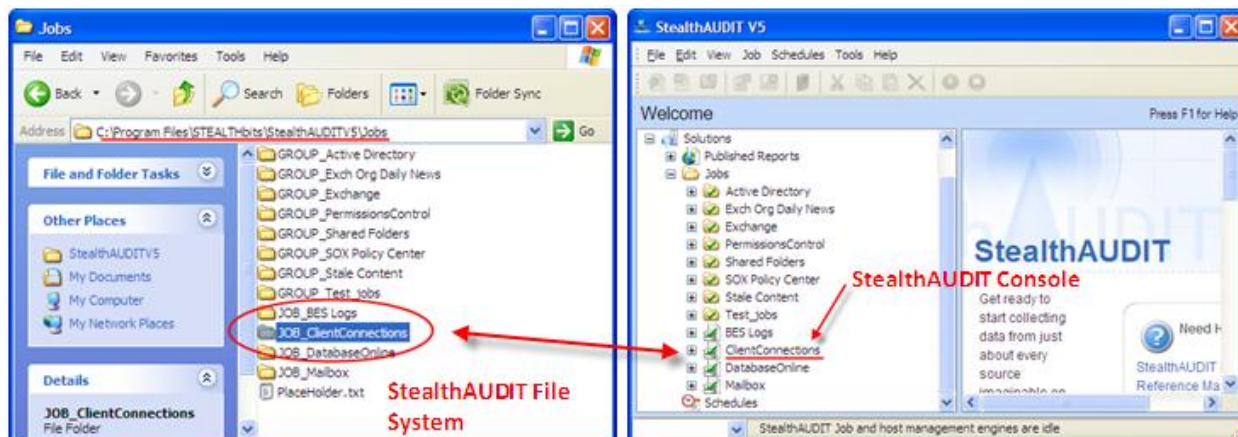
If your Job or Job Group is already in the standard folder format, copy and paste the Job or Job Group into the Jobs directory within StealthAUDIT.

**Extract JOB\_X or GROUP\_X to [DRIVE LETTER]:\Program Files\STEALTHbits\StealthAUDITV[X]\Jobs**





**Step 2:** There is no need to shutdown or restart your StealthAUDIT console, simply right-click the “Jobs” folder and select “Refresh”. Your new Jobs and Job Groups will now be displayed in the tree.



Your new Jobs and Job Groups will now be displayed in the navigation tree.

For additional troubleshooting tips and information email [support@stealthbits.com](mailto:support@stealthbits.com).

