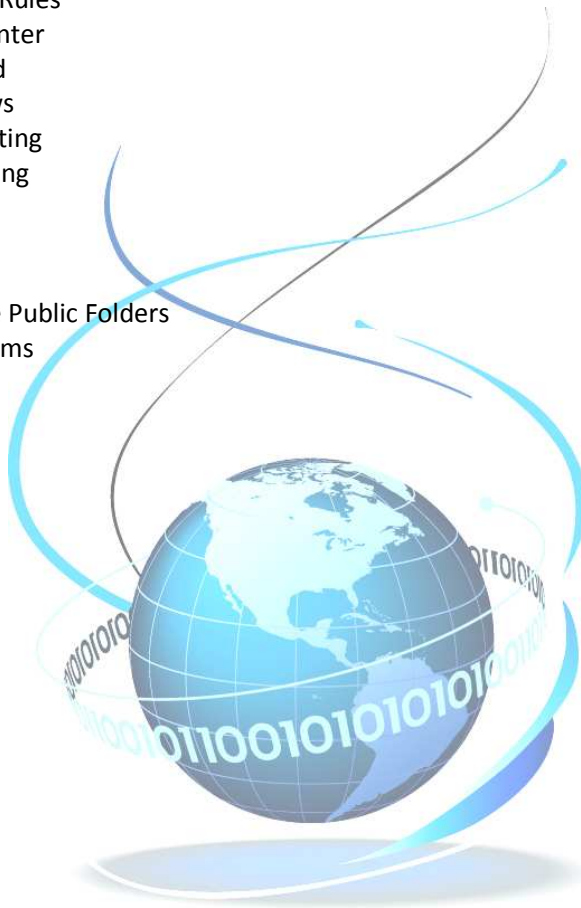


StealthAUDIT version 4.4

Table of Contents:

1. Core Product Enhancements
2. Improved Host Management
 - a. Native Cluster Awareness
 - b. Dynamic Host Lists from Job Results
3. Improved Job Scheduling
 - a. Automatic Job Retry
 - b. Scheduled Host List Selection
4. Data Collector Enhancements
5. Analysis Modules
 - a. Business Rules
 - b. Policy Center
 - c. SQL trend
 - d. SQL views
 - e. SQL scripting
 - f. VB scripting
6. Action Modules
 - a. SendMail
 - b. Survey
 - c. Exchange Public Folders
 - d. File Systems
 - e. Registry



STEALTHbits Technologies, Inc.

SALES DIRECT: (201) 447-9300

www.stealthbits.com | sales@stealthbits.com

© 2008 STEALTHbits Technologies, Inc. All rights reserved.

STEALTHbits
TECHNOLOGIES

New Features:

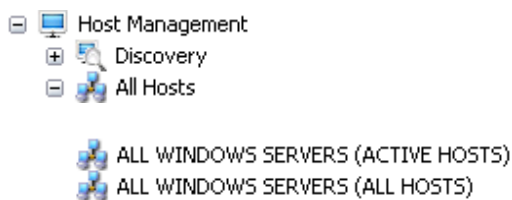
- 1. Core Product Enhancements** – StealthAUDIT was already the fastest agent-less auditing tool on the market, but we continue to make speed enhancements to both the core engine and to our existing Data Collectors where ever possible.

Data Collectors improved:

- Exchange Mailbox
- Exchange Public Folder
- Group Policy
- LDAP
- Performance Monitor
- Services
- System Info
- Text Search
- Unix
- Users & Groups
- WMI

- 2. Improved Host Management** – Prior to collecting information on anything else about your systems and applications, you need solid control over the hosts you plan to collect information from.

a. Native Cluster Awareness - We've added *native detection* of both Windows and Exchange clustered systems in our Host Management area.



ALL WINDOWS SERVERS (Active Hosts) – This list will contain both non-clustered servers and those that are recognized as *windows virtual cluster nodes* (audits would be answered by the *active* physical node). Audit jobs that target the application layer (Active Directory, Database, etc.) spread across both clustered and non-clustered systems should target this host list to avoid redundant information in the database and reports.

ALL WINDOWS SERVERS (All Hosts) – This group contains a dynamic list of all *physical servers* identified as Windows Servers. This list will contain any physical windows server regardless of its

STEALTHbits Technologies, Inc.



SALES DIRECT: (201) 447-9300

www.stealthbits.com | sales@stealthbits.com

© 2008 STEALTHbits Technologies, Inc. All rights reserved.


STEALTHbits
TECHNOLOGIES

participation in a cluster or not. Audit jobs that are built to target configuration information (patches, registry, and services) should be run against this host list.

 ALL EXCHANGE SERVERS (ACTIVE HOSTS)
 ALL EXCHANGE SERVERS (ALL HOSTS)

ALL EXCHANGE SERVERS (Active Hosts) – This list will contain both non-clustered exchange systems and those that are recognized as *exchange virtual cluster nodes* (audits would be answered by the *active* physical node). Audit jobs that target the application layer of Exchange (Mailboxes, Public Folders, Metrics, etc.) spread across both clustered and non-clustered systems should target this host list to avoid redundant information in the database or reports.

ALL EXCHANGE SERVERS (All Hosts) – This group contains a dynamic list of all *physical systems* identified as Exchange Servers. This list will contain any physical exchange systems regardless of its participation in a cluster or not. Audit jobs that are built to target system configuration information (patches, registry, and services) should be run against this host list.

 ALL WINDOWS WORKSTATIONS

ALL WINDOWS WORKSTATIONS – this group will contain a dynamic list of all systems that are recognized as workstations.

STEALTHbits Technologies, Inc.

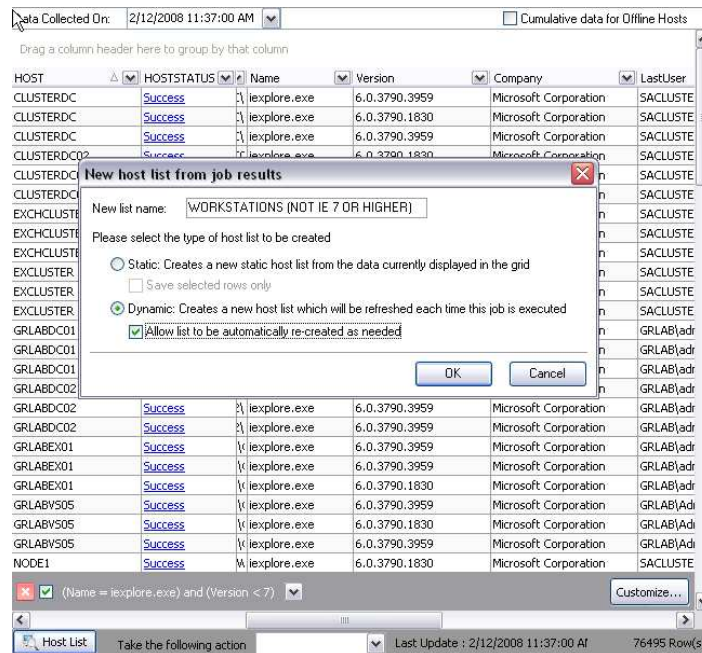
SALES DIRECT: (201) 447-9300

www.stealthbits.com | sales@stealthbits.com

© 2008 STEALTHbits Technologies, Inc. All rights reserved.

STEALTHbits
TECHNOLOGIES

b. Dynamic Host Lists from Job Results – Dynamic host lists can be created from the results of audit jobs. You’ve always had the ability to audit, review, filter and report on information collected. Now right from any result table, you can create your filtered view on the results and save this as a dynamic or static host list.



The Host Lists can be created by clicking the **Host List** button in the lower left-hand corner of any result table. Simply name the new host list and select whether it will be a static one time only list or a dynamic list.

Selecting **Static** lists will create a new host list under the global host management area.

The additional checkbox (*save selected rows only*) will become active when individual highlighted rows have been selected instead of using a custom filter to create your static list.

Selecting **Dynamic** lists will create a new host list query under the global host management area. When audit jobs that target that list are run, the database will be queried for an updated list of hosts according to the current filter.

The additional checkbox (*allow the list to be automatically re-created as needed*) is selected by default and saves the dynamic host list information within the job properties. If the Dynamic host list is deleted from the host management area, this job will recreate it at next execution.

STEALTHbits Technologies, Inc.

SALES DIRECT: (201) 447-9300

www.stealthbits.com | sales@stealthbits.com

© 2008 STEALTHbits Technologies, Inc. All rights reserved.

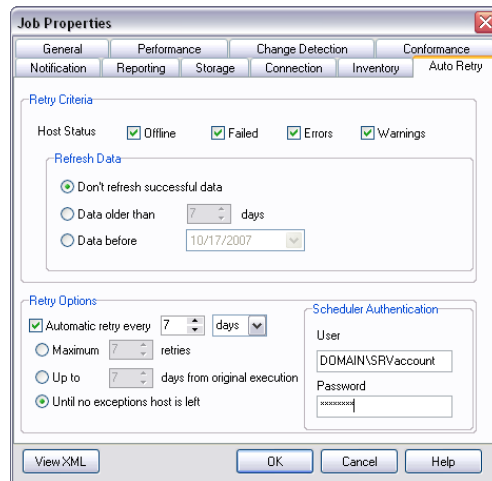
STEALTHbits
TECHNOLOGIES

- 3. Improved Job Scheduling** – Having accurate, consistent, and complete information is essential to making the right business decisions to managing your systems and applications. Several enhancements have been made to assist with filling in missing data and targeting hosts for data collections at the right time.

a. Automatic Job Retry - By right-clicking any audit job and viewing the *properties*, you can select the **Auto Retry** tab to configure and activate this new feature.

First, select the **Retry Criteria** that will target the job to run against only host that were *offline*, *failed*, *had errors*, and/or *had warnings* during the previous run.

Next, set any limits on how to refresh the data when some data was collected for the host in previous passes. Selecting “*Don’t refresh successful data*” forces the job to skip hosts that had *failed*, *errors*, or *warnings* but did succeed to actually get the data you were seeking. You can also select to only refresh the data if a certain date or time has passed.



Selecting the checkbox within **Retry Options** will enable this feature. Audit jobs are then scheduled by administrators as normal with a right-click of the job. After the completion of a full pass of all hosts in its target list, **Auto Retry** will configure the follow up jobs to run during the configured intervals. If the original job is scheduled to run on a consistent basis, all hosts will be targeted (as normal) during the next full job scheduled run and Auto Retry will follow the same scheduling process mentioned above.

Finally, user credentials are required to be entered for **Auto Retry** in addition to any globally stored connection profiles.

NOTE: Jobs can be scheduled to run against a host list that differs from its' configured host list (new feature shown next). **Auto Retry** will use that alternate Host List when rescheduling the job for follow up runs.

STEALTHbits Technologies, Inc.

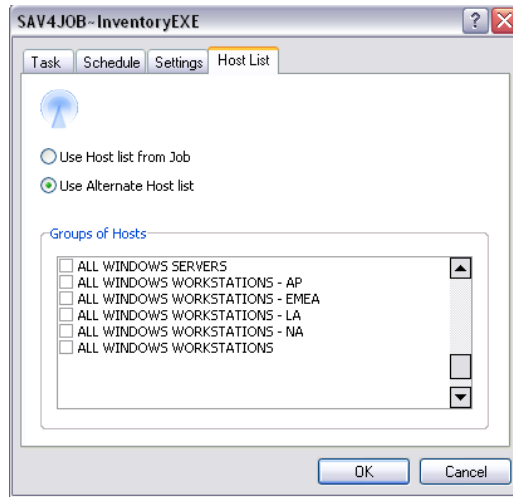
SALES DIRECT: (201) 447-9300

www.stealthbits.com | sales@stealthbits.com

© 2008 STEALTHbits Technologies, Inc. All rights reserved.

STEALTHbits
TECHNOLOGIES

b. Scheduled Host List Selection – There is a new tab available when scheduling audit jobs to run that will allow the administrator to target an alternate host list to the one that is configured within the job configuration area.



Administrators can now use a single job to target multiple host lists at different time intervals. This is great when using a single job that needs to catch workstations online during peak business hours in several different time zones!

4. Data Collector Enhancements – Aside from speed enhancements, we've added tons of new features and attributes to most of our 22 Data Collectors. Some Data Collectors have changed so much they almost no longer resemble their previous versions. Below is a quick summary of the different data collectors that have new features in this version:

1. **Active Directory** – Extended the Active Directory DC with the capability to retrieve advanced security permissions.
2. **Exchange 2K** – Added Exchange 2007 compatibility.
3. **Exchange Mailbox** – Speed enhancements plus added the ability to retrieve message classes, archiving messages, and Exchange 2007 Unified Messaging classes. Additionally, added Exchange 2007 compatibility.
4. **Exchange Public Folder** – Speed enhancements plus added business intelligence for determining Probable Public Folder Owner.
5. **Exchange Metrics** – Added Exchange 2007 compatibility.
6. **Event Log** – Added extended event descriptions and the ability to return the first and last event entries.
7. **File System** – Added the ability to collect matched file names separate from full file path.
8. **Group Policy** – Speed enhancements.
9. **LDAP** – Speed enhancements.
10. **Patch Check** – Added support for Windows Vista and 2008 32 bit and 64 bit operating systems.
11. **Performance Monitor** – Speed enhancements.
12. **Services** – Speed enhancements.
13. **System Info** – Added business intelligence for Probable System Owner and Probable Shared Folder Owner. Shared Folder attributes extended for capacity planning.
14. **Text Search** – Speed enhancements.
15. **UNIX** – Speed enhancements.
16. **Users & Groups** – Speed enhancements.
17. **WMI** – Speed enhancements.

STEALTHbits Technologies, Inc.

SALES DIRECT: (201) 447-9300

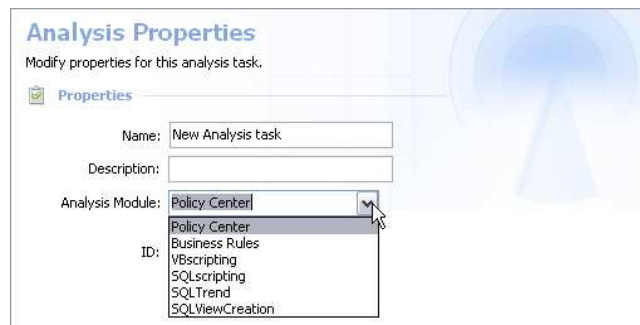
www.stealthbits.com | sales@stealthbits.com

© 2008 STEALTHbits Technologies, Inc. All rights reserved.



5. **Analysis Modules** – StealthAUDIT is a great application to automate discovery, inventory, and auditing of your systems and applications. Analysis Modules are a powerful new enhancement introduced in version 4.4 that now adds the capability to easily and quickly manipulate the tons of data you've collected and turn it into valuable information without having to be a SQL guru.

Analysis Modules are found under each job configuration area.



- a. **Business Rules** – The Business Rules analysis module provides the ability to evaluate data collected within your audit jobs against your specific business rules. Pass/Fail results can be accumulated into a *SCORECARD* table along with a score and/or rating. This *SCORECARD* can be used in conjunction with all other aspects of StealthAUDIT for alerting, reporting, etc.
- b. **Policy Center** – The Policy Center analysis module is a huge enhancement to StealthAUDIT by itself. This analysis module extends Business Rules by allowing you to centrally manage and configure multiple policies associated with your systems. Manage and maintain internal, industry standard, or government regulatory policies with this easy to use wizard. Using Policy Center in conjunction with StealthAUDIT, you'll spend less time managing policies and more time enforcing them. Enforced policies lead to better, stable, safer and consistent environments.
- c. **SQL trend** – The SQL trend analysis module provides the ability to quickly convert historical audit data into a view or table that be used for generating table-based and line chart reports in order to analyze previously audited data and plan for future needs.
- d. **SQL views** – The SQL views analysis module provides the ability to combine multiple tables into a joined view or table for all types of reporting needs.
- e. **SQL scripting** – The SQL scripting analysis module provides the ability to embed custom SQL scripts right within the StealthAUDIT framework. Now you can easily incorporate very advanced and powerful SQL scripts to manipulate your StealthAUDIT data without the overhead of worrying about forcing integration.

STEALTHbits Technologies, Inc.

SALES DIRECT: (201) 447-9300

www.stealthbits.com | sales@stealthbits.com

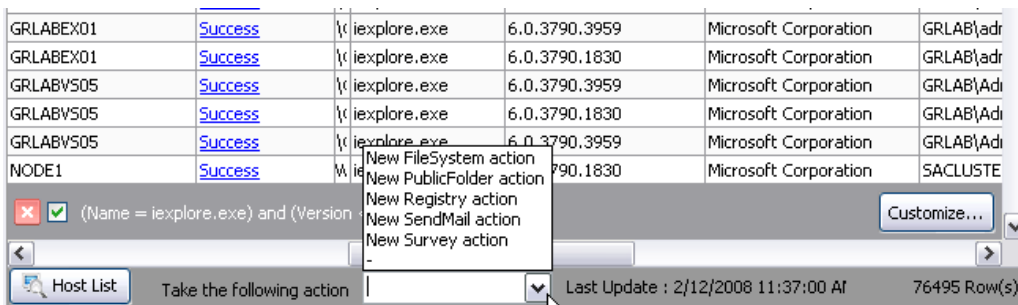
© 2008 STEALTHbits Technologies, Inc. All rights reserved.

STEALTHbits
TECHNOLOGIES

- f. **VB scripting** – The VB scripting analysis module provides the ability to embed custom Microsoft Visual Basic (VB) scripts right within the StealthAUDIT framework. Now you can easily incorporate very advanced and powerful VB scripts to manipulate your StealthAUDIT data without the overhead of worrying about forcing integration.
- 6. Action Modules** – The biggest enhancement to the product line is the addition of the add-on Action Modules. Now you can leverage the power of StealthAUDIT to take targeted and surgical changes to your systems and applications using Action Modules right from your centralized console. Use our unique workflow to interact with administrators, end users, and managers to verify audit information, obtain supplemental information, or obtain authorization to make changes.

Action Modules are a separately purchased add-on module that greatly extends the capabilities of StealthAUDIT.

Once installed, **Action Modules** are invoked from any job results table. First, apply any filters to the audit job results to target only those objects, systems, or people that you would like to take action against. Then, select from the growing number of action modules using the drop down menu at the bottom center of the result table.



You'll be presented with very easy to use wizards for configuring the action selected.

- a. **SendMail** – The SendMail action module provides the ability to e-mail customize messages to end users, resource owners, and system administrators. E-mail address capabilities include using: Active Directory Distinguished Name, Exchange Mailbox, SMTP Address, Windows Security Identifier, or Windows User ID. Using the SendMail action module, administrator's can create custom templates with descriptive messages, HTML formatting, corporate color schemes and logos, and the dynamic inclusion of any auditing information.
- b. **Survey** – The Survey action module extends the capability of the SendMail Action Module by additionally including an embedded HTTP link within a SendMail message to provide targeted end users and administrators with a survey form. Using the Survey action module, administrator's can create custom templates with descriptive messages, HTML formatting, corporate color schemes and logos, and the dynamic inclusion of any

STEALTHbits Technologies, Inc.

SALES DIRECT: (201) 447-9300

www.stealthbits.com | sales@stealthbits.com

© 2008 STEALTHbits Technologies, Inc. All rights reserved.



auditing information to ask questions of their desired audience. The responses from the target audience are tied to the audit information and available for easy and custom reporting needs.

- c. **Exchange Public Folders** – The Exchange Public Folder action module provides the ability to make changes to Public Folders including: changing access permissions, age limits, custom attributes, replica copies, renaming folders, and even removing stale credentials associated with folders.
- d. **File Systems** – The File System action module provides the ability to make changes to remote files systems including; changing attributes, changing permissions, deploying, copying, deleting, moving, replacing or renaming folders and/or files.
- e. **Registry** – The Registry action module provides the ability to make changes to remote system registries including; changing permissions, creating, modifying, and deleting registry keys and/or values. Additionally, this action module allows an administrator to import a registry file to make bulk registry changes against remote systems.



STEALTHbits Technologies, Inc.

SALES DIRECT: (201) 447-9300

www.stealthbits.com | sales@stealthbits.com

© 2008 STEALTHbits Technologies, Inc. All rights reserved.

STEALTHbits
TECHNOLOGIES